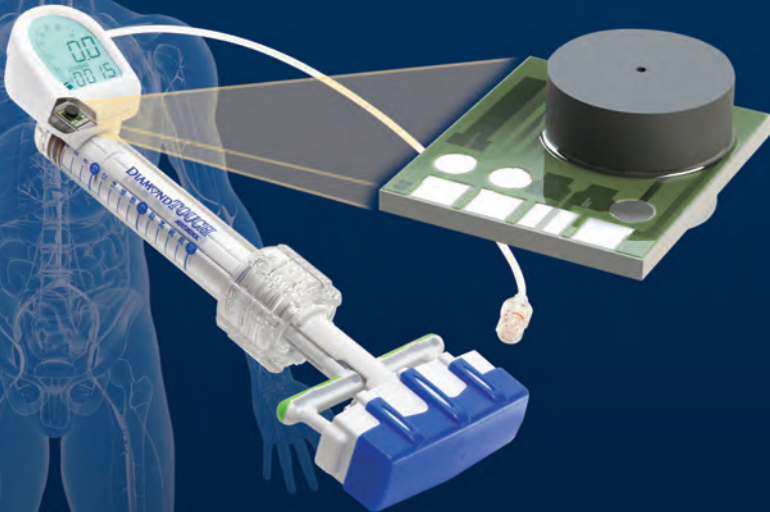
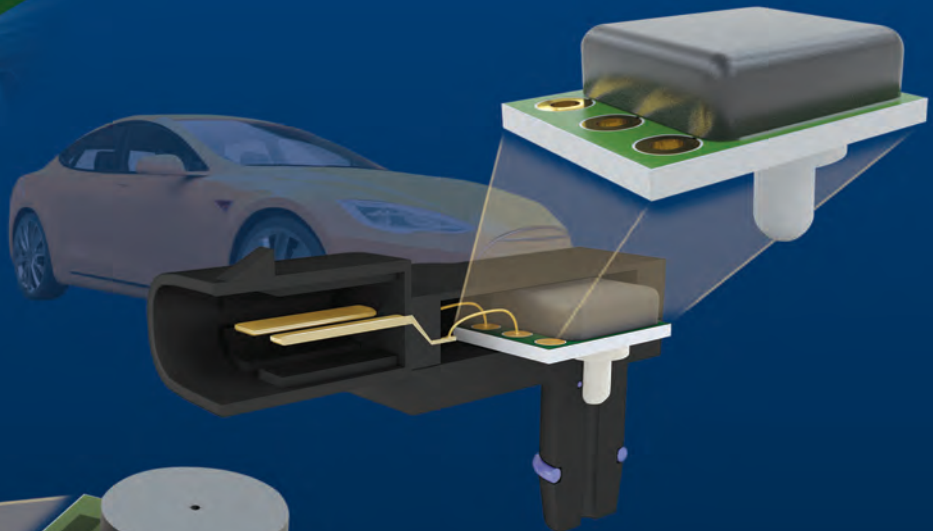
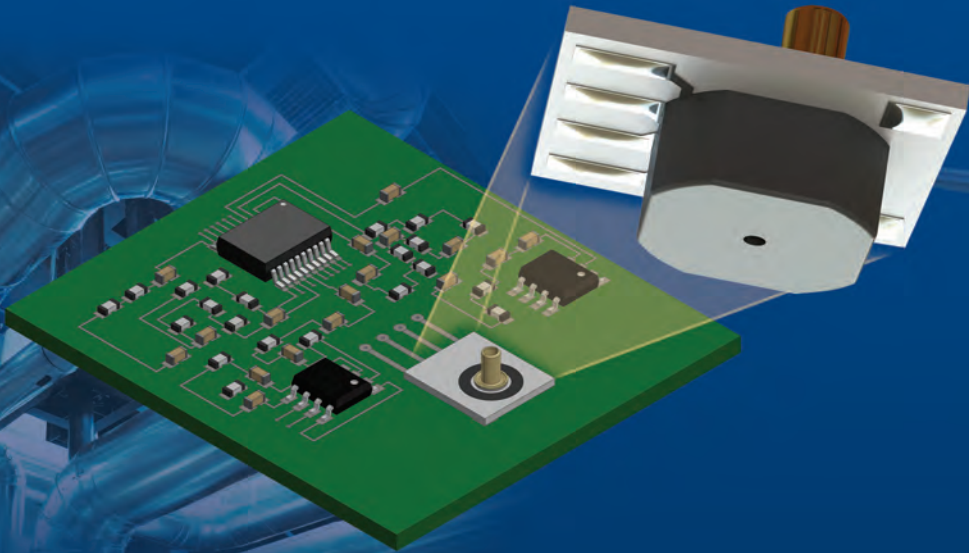




MERIT SENSOR™



MEMS PRESSURE SENSOR  
**SOLUTIONS**

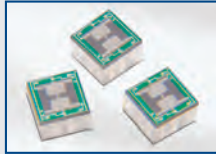


# MERIT SENSOR™

## MEMS SENSING ELEMENTS

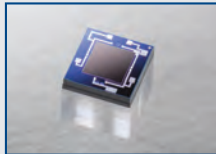
### L Series

psi	0.15–1
mbar	10.3–68.9
kPa	1–6.9
size (mm)	3.3 x 3.3



### J Series

psi	1–300
bar	0.07–21
kPa	7–2,100
size (mm)	1.95 x 1.95



### D Series

psi	15–300
bar	1–20.7
kPa	103–2,068
size (mm)	1.42 x 1.42



### 7000 Series

psi	15–500
bar	1–34.5
kPa	103–3,447
size (mm)	2.2 x 1.6



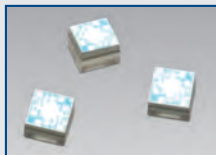
### HM Series

psi	15–500
bar	1–34.5
kPa	103–3,447
size (mm)	2.08 x 2.08



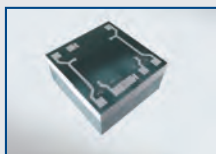
### K Series

psi	1,000–10,000
bar	68.9–690
kPa	6,895–68,948
size (mm)	1.4 x 1.4



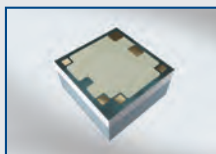
### S Series

psi	5–300
bar	0.34–21
kPa	34–2,068
size (mm)	1.5 x 1.5



### C Series

psi	5–300
bar	0.34–21
kPa	34–2,068
size (mm)	2.4 x 2.4



## UNCOMPENSATED PACKAGES

### SMD & MS Series

surface mountable

psi	5–500
bar	0.34–34.5
kPa	34.5–3,447
temp (°C)	-40–85



### PMD Series

thru-hole mountable

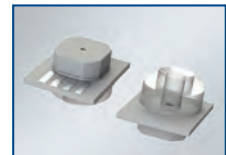
psi	5–60
bar	0.34–4.1
kPa	34.5–414
temp (°C)	-40–125



### RPD Series

polycarbonate port

psi	0–500
bar	0–34.5
kPa	0–3,447
temp (°C)	-40–85



### RS Series

surface mountable

psi	0–500
bar	0–34.47
kPa	0–3,447
temp (°C)	-40–85



### LP Series (1400)

ultra-low pressure

psi	0.04–1
mbar	2.49–68.9
kPa	0.25–6.9
inH <sub>2</sub> O	1–27.7
temp (°C)	-40–85

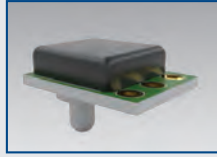


## COMPENSATED PACKAGES

### TVC Series

wet, harsh media

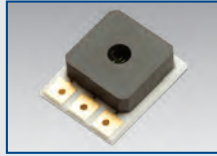
psi	15–300
bar	1–21
kPa	103–2,068
temp (°C)	-40–150



### TR Series

wet, harsh media

psi	15–500
bar	1–34.5
kPa	103–3,447
temp (°C)	-40–150



### LP Series (1410 & 1420)

ultra-low pressure

psi	0.04–1
mbar	2.49–68.9
kPa	0.25–6.9
inH <sub>2</sub> O	1–27.7
temp (°C)	-40–85



### HTS Series

analog & digital

psi	1–100
mbar	68.95–6,895
kPa	6.89–689.5
temp (°C)	-40–125



## PASSIVE COMPENSATED PACKAGES

### BP Series

blood pressure

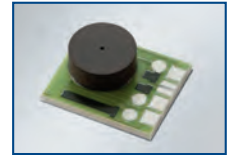
mmHg	-30–300
psi	-0.58–5.8
mbar	-40–400
kPa	-4–40
temp (°C)	15–40



### AP Series

laser-trimmed output

psi	0–500
bar	0–34.5
kPa	0–3,447
temp (°C)	10–40



## CUSTOM ASSEMBLIES

### MSS100

wet, harsh media

psi	15–100
bar	1–6.9
kPa	103.4–689.5
temp (°C)	10–50



## EVALUATION KITS

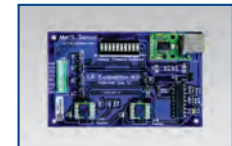
### MeriTREK

TR Series evaluation kit



### MULPEK

LP Series evaluation kit



[www.meritsensor.com](http://www.meritsensor.com)

Merit Sensor owns and operates a MEMS wafer fab as well as assembly areas. These on-site resources, in addition to our 28 years of experience producing piezoresistive pressure sensors, help us provide products that meet the unique needs of our diverse customers. No matter what your application may be, we will help you handle the pressure.



1600 West Merit Parkway  
South Jordan UT 84095  
USA

Sales +1 801 208 4722  
Customer Service +1 801 208 4700  
Fax +1 801 208 4798  
Email [sales@meritsensor.com](mailto:sales@meritsensor.com)  
[www.meritsensor.com](http://www.meritsensor.com)



**MERIT SENSOR™**

Merit Sensor is a subsidiary of Merit Medical Systems, Inc.

